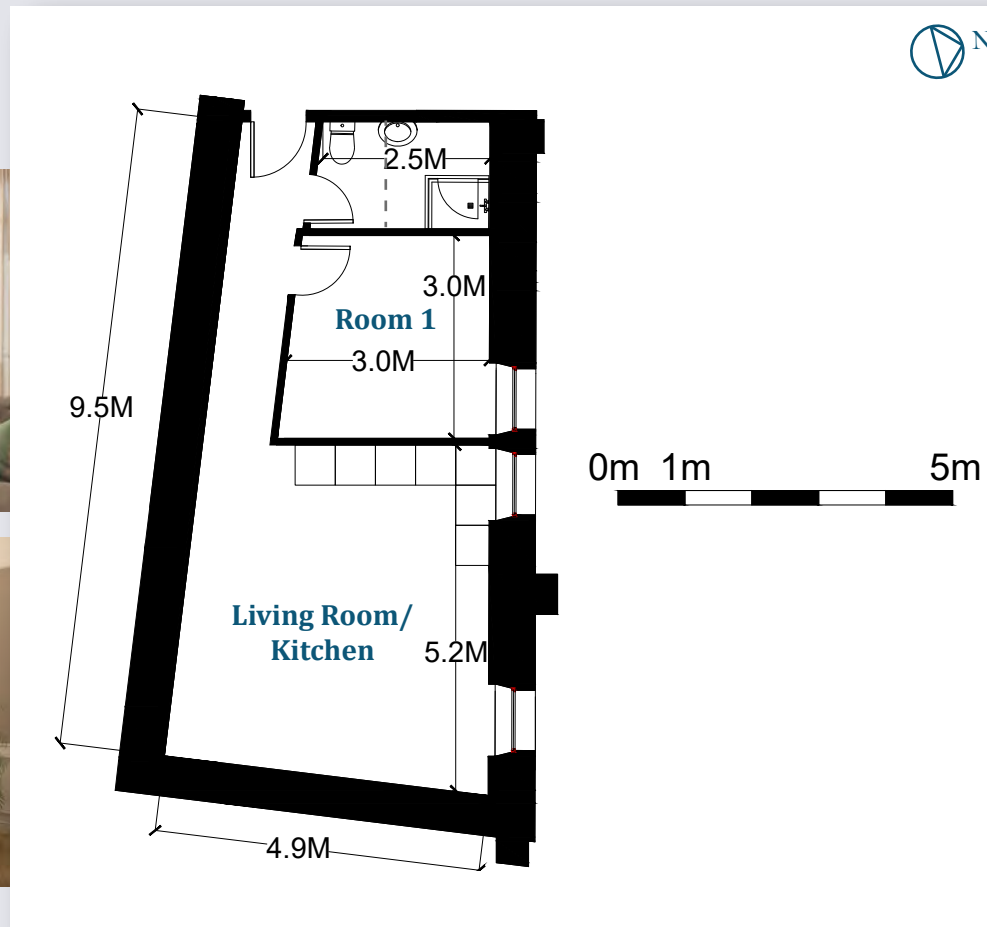
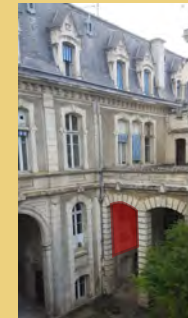


APARTMENT B2

Total Area: 40.9m²

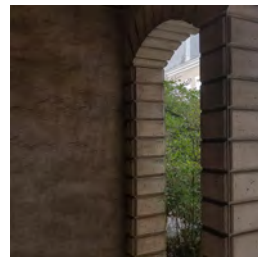


ROOM	AREA
Living Room/ Kitchen	22.6m ²
Room	9.1m ²
Bathroom	4.2m ²
Hallway	5.0m ²
	40.9m²



12 Rue de la Ferrandié 16500 Confolens

Zed Immobilier SASU - Au capital social de 5,000 €, Siren: 833 469 851 - RCS Angoulême - Siège social : 2 Rue De L'Hopital 16500 Confolens



An airy 1-bedroom apartment with a beautiful tall top archway windows and a spacious living room that looks into the wonderfully landscaped inner courtyard. The apartment features storage.

The apartment benefits from the beautiful B Block entrance with its original features, flooring and character, as seen below.