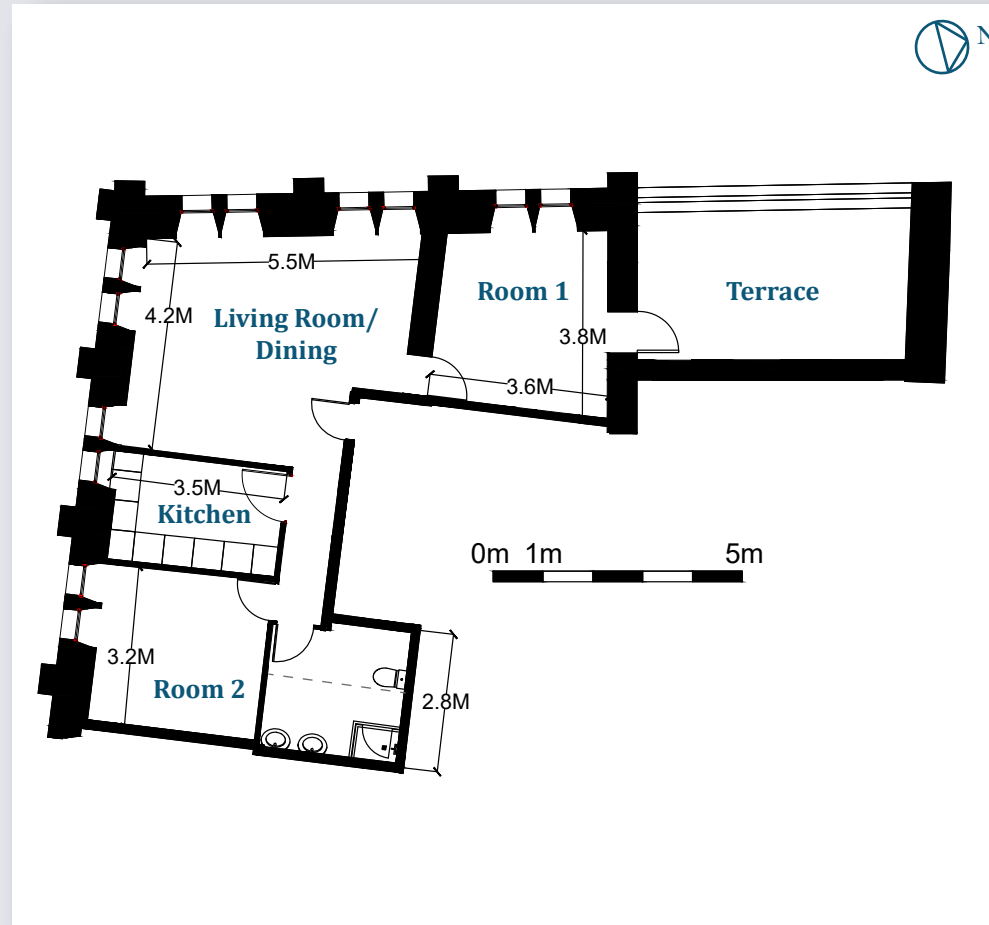


# APARTMENT B5

Total Area: 79.3m<sup>2</sup>



ROOM	AREA
Living Room/ Dining	23.4m <sup>2</sup>
Kitchen	7.1m <sup>2</sup>
Room 1	12.0m <sup>2</sup>
Room 2	10.5m <sup>2</sup>
Bathroom	7.1m <sup>2</sup>
Hallway	2.9m <sup>2</sup>
<hr/>	
	63.0m <sup>2</sup>
<hr/>	
Terrace	16.3m <sup>2</sup>
<hr/>	
	79.3m <sup>2</sup>



Spacious, L-shaped corner 2-bedroom apartment that gets lots of sunshine through many windows. The living room is particularly spacious, luminous and airy with several tall windows on both corners. The apartment has a separate kitchen and two good size bedrooms. The main bedroom leads to a large 16.3m<sup>2</sup> private terrace that overlooks Rue du Couvent des Clarisses.

The apartment also has built-in storage. The apartment is one of the few apartments in the development that features a terrace.

It also benefits from the beautiful B Block entrance with its original features, flooring and character, as seen on the left.



12 Rue de la Ferrandié 16500 Confolens

Zed Immobilier SASU - Au capital social de 5,000 € Siren: 833 469 851 - RCS Angoulême - Siège social : 2 Rue De L'Hopital 16500 Confolens